

580x

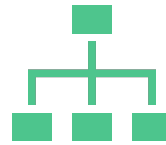
Work Breakdown Structure

WBS Basics



What?

Tool used to convert the project charter into actionable items or roadmap



How?

Break project into phases or deliverables and define the activities to meet them



When?

Planning, executing and monitoring

Defining the WBS



Hierarchical listing of tasks



The total of the tasks represent the scope and project completion



Helps thought out the project in advance



Simple visual representation helps keep track of progress and assign responsibilities

Thesis applications

Broad

- Large scope: Whole project
- Outline steps to degree completion
- Opportunity to align to advisor's vision and manage expectations
- Use as roadmap for everyday planning and discussions about project with stakeholders

Specific

- Small scope: side projects or specific responsibilities
- WBS dedicated to a portion of the broader WBS for more specificity
- Examples: writing a paper, undergrad projects, professional development

Types of WBS

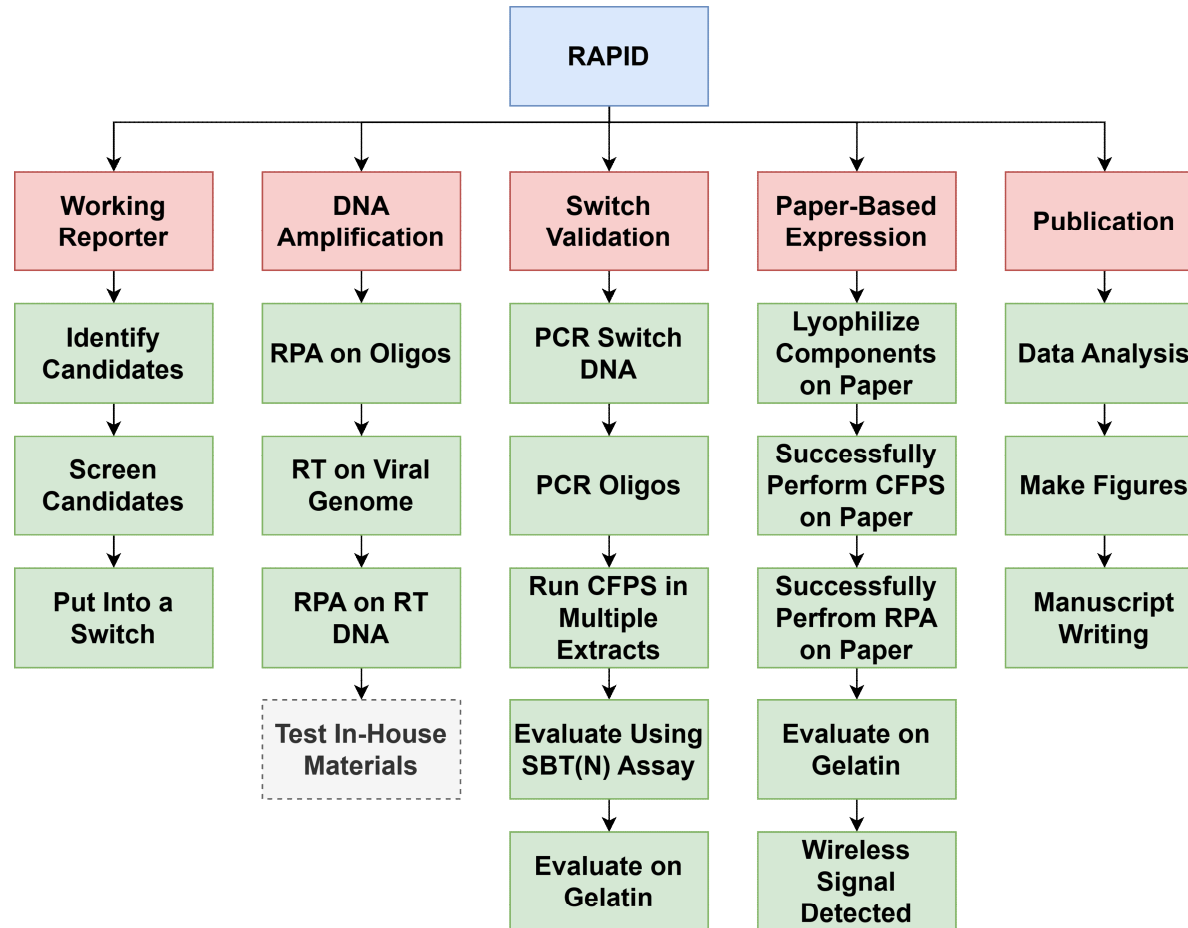
Deliverable-based

- Level 1 lists deliverables or goals
- Level 2 lists the tasks needed
- Very straightforward
- Similar to a block flow diagram
- Can't indicate how close you are to completion

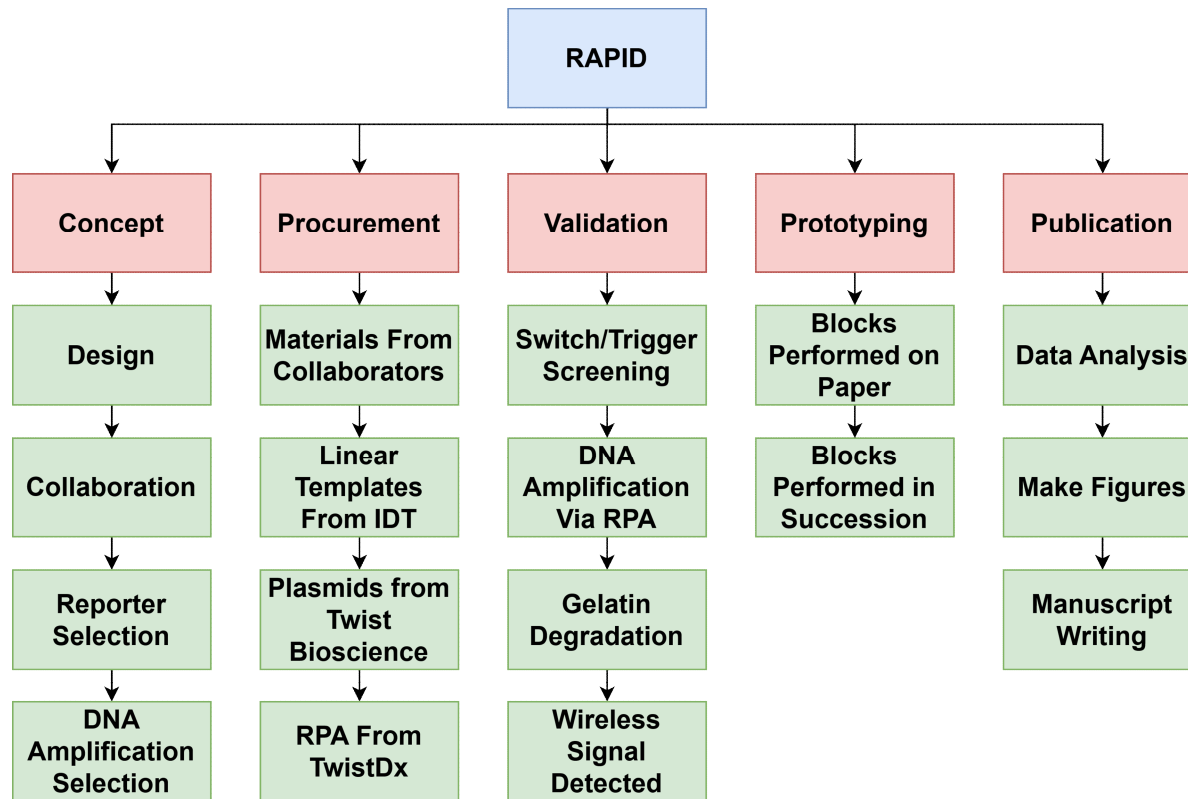
Phase-based

- Level 1 lists the phases of the project
- Level 2 lists tasks needed to complete the phase
- Better for a general overview of the project
- Doesn't accurately represent the work done in each phase

Deliverable-based



Phase-based



Questions?

